

Equipment

Dosing equipment and application aids



Accessories for the reliable, efficient dosage and hygienic application of disinfectants, wash and skin care lotions.



BODE Eurodispenser 1 plus



For hand disinfectants, wash lotions and skin care lotions

- robust metal dispenser
- easy pump exchange through removal from the front
- easy handling and cleaning
- simple and fast bottle exchange
- easy handling

Technical data

Dispenser for	350/500 ml	1000 ml
Height	295 mm	340 mm
Width	82 mm	92 mm
Depth incl. arm lever	215 mm	225 mm
Dosage adjustable from	0.75 to 1.5 ml per actuation	

Autoclaving of the complete dispenser at 121 °C, 1 bar.



Drop catcher



Bedframe fixation



Locking device



Mounting angle

Properties

Robust, autoclavable metal dispenser for the hygienic application of hand disinfection, cleansing and care products. Easy pump exchange through removal from the front. BODE Eurodispenser 1 plus is a user-friendly dosing dispenser, that can be utilised flexibly. Advantages at a glance:

- all removable parts completely autoclavable
- easy installation even with limited space
- all standard bottles insertable
- dosing amount adjustable to approx. 0.75 to 1.5 ml per actuation
- delivery incl. mounting parts, instruction sheet and manual

Set-up

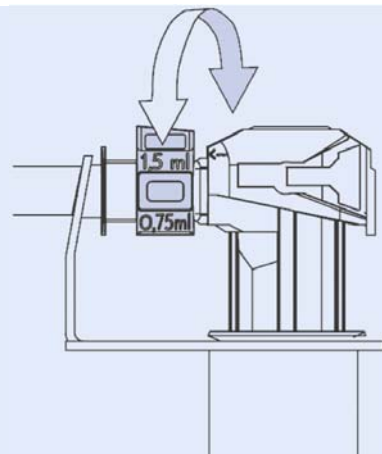
- Open cover with panel, control lever and outlet screen
- Wall plate with three drilled holes (identical to Eurodispenser 1)
- Pump

Material

- Cover made of matt silver, anodised aluminum; corrosion-resistant and shock-proof
- Panel, control lever and liquid pump made of stainless V₂A-steel
- Rear panel and outlet screen made of plastics with good alcohol and tension resistance
- All materials were tested for food conformity

Dosing

The dispenser is adjusted to the maximum dosing amount of approx. 1.5 ml/actuation. If required, the dosing amount can be reduced stepwise to approx. 0.75 ml/actuation by turning the dosing piece.



BODE Eurodispenser 1 plus

Mounting instructions

Preparation of the mounting location

When selecting the mounting location, the following points have to be considered:

- irrespective of dispenser type, provide for a space of approx. 50 mm (necessary for dismantling the dispenser)
- keep a minimum distance between dispenser and top edge of wash basin or work space (for trouble-free bottle exchange)
- the wall should be clean, dry and even
- mind the bearing capacity: besides weight of dispenser, pump and product bottle, the load of arm lever actuation has to be considered. Therefore, please only use the provided mounting material for attaching the Eurodispenser to the wall
- make sure that no electric cables, gas mains or other utility cables and pipes are damaged by drilling

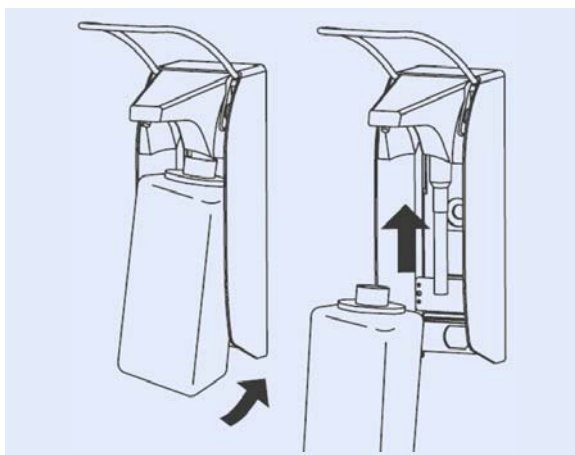
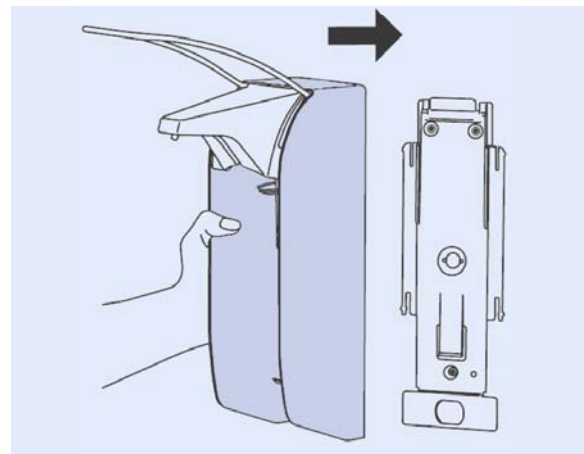
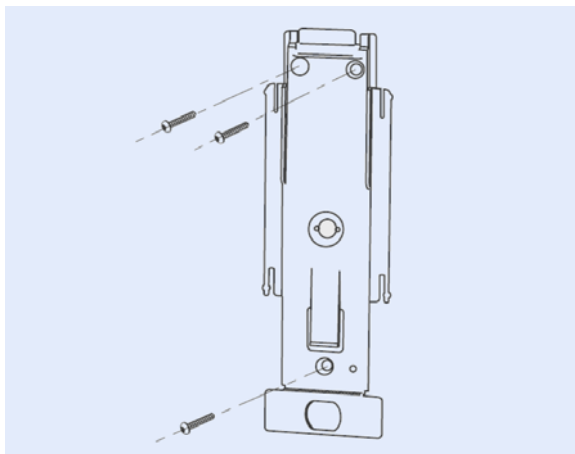
Warning: the BODE Eurodispenser 1 plus cannot be attached to the wall with Powerstrips. For secure mounting use the provided mounting material.

Mounting

For mounting you need a drilling machine, a 6 mm drill (type depends on wall material), and a screwdriver or a cordless screwdriver. All other mounting material (wall anchors, screws, shims) is included in delivery. Data on dispenser dimensions, necessary minimum distance to washbasin/work space, etc. you will find in the aforementioned detail drawings.

Mark drill holes on the wall, carry out drilling and put wall anchors in. Take dispenser out of the cardboard box:

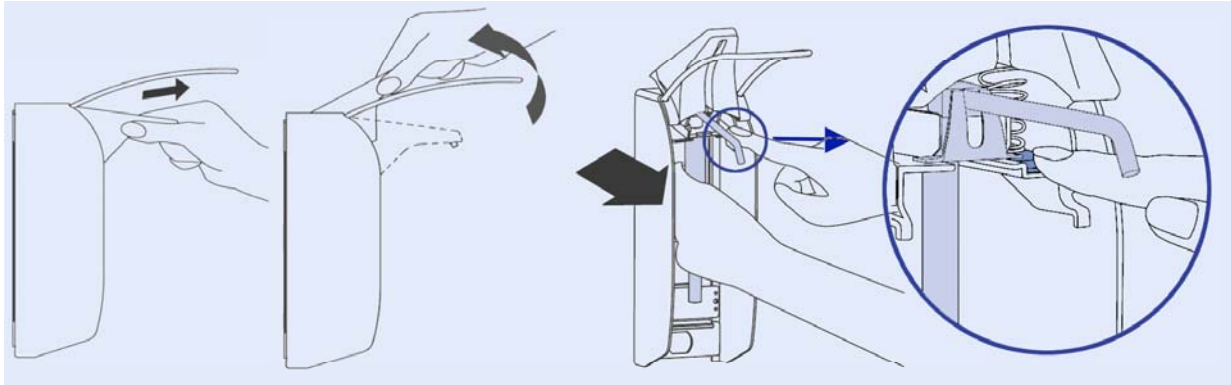
1. Press locking tongue and pull wall holder off the housing
2. Mount backplate with wall anchors and screws at the designated location
3. Slide dispenser on the backplate (top down) until the locking tongue snaps in
4. Put bottle in dispenser (bottom-up)
5. For activation press arm lever several times, so that the dip tube sucks in the product. In doing so, hold your hand under the outlet



BODE Eurodispenser 1 plus

Pump exchange

Slightly pull and then turn the outlet cover upwards. Keep pump lock pressed and pull pump out.



Reprocessing of the BODE Eurodispenser 1 plus

Cleaning and disinfection of the dispenser body and dosing pump should be carried out each time the bottle is exchanged.

Manual reprocessing of the dispenser

- take bottle out of dispenser
- take dosing pump out
- push cap up by pressing the locking tongue
- rinse cover thoroughly under hot running water until no product residuals are visible anymore
- clean rear, screwed on dispenser part with moistened disposable tissue
- spray both dispenser parts with an alcohol-based surface disinfectant and wipe them with disposable tissues if required; pay attention to application time
- slide on cover
- put in new or separately reprocessed dosing pump (see below)
- hook in new bottle and pump product through

Manual reprocessing of the pump

- First of all, rinse pump thoroughly with hot water and cleanse it of product residuals
- Rinse pump thoroughly with alcohol-based surface disinfectant and leave it for 5 minutes
- Afterwards pump it dry
- After complete drying, insert pump again or store it in dust-free area

Note: Do not use abrasives or corrosive cleaners

Sterilisation

For routine usage and compliance with the hygiene standards, manual cleaning and disinfection of dispenser and dosing pump (like described above) suffice. In areas, where hygiene is of particular importance, a higher hygiene standard may be necessary. In these cases all removable parts of the BODE Eurodispenser 1 plus can be autoclaved with superheated steam (121°C, 1 bar).



BODE Eurodispenser 1



For hand disinfectants, wash lotions and skin care lotions

- robust metal dispenser
- possible pump exchange
- various fittings available
- rapid filling
- easy handling

Technical data

Dispenser for	350/500 ml	1000 ml
Height	283 mm	327 mm
Width	82 mm	92 mm
Depth incl. arm lever	225 mm	225 mm
Dosage adjustable from 0.8 – 1.8 ml per actuation		
Autoclaving of the complete dispenser at 121 °C, 1 bar.		
Different lengths of arm lever available.		

Accessories to BODE Eurodispenser 1



Drop catcher



Bedframe fixation



Locking device



Mounting angle

BODE Eurodispenser 1 is a user-friendly dosing dispenser, which can be utilized flexibly. Thanks to its robust, autoclavable metal body it withstands even highest stresses and hygiene requirements.

BODE Eurodispenser 1 is suitable for the application of all hand disinfectants, wash lotions and skin care products in standard bottles.

Advantages at a glance:

- reliable, robust metal dispenser
- all removable parts completely autoclavable*
- easy installation even with limited space
- all standard bottles insertable
- simple and fast bottle exchange
- easy handling and cleaning
- exchangeable pump
- dosing amount of liquid pumps adjustable to 0.8, 1.2 and 1.8 ml per actuation
- delivery incl. mounting parts, instruction sheet and manual
- available with short, long and extra-long arm lever

*except the foam pump



BODE Eurodispenser 1

Set-up and material

With its concise design and high-quality materials the BODE Eurodispenser 1 is a particular low-maintenance, sturdy dosing dispenser. The device is set up with a few modules:

- open cover with panel, control lever and outlet screen
- wall holder with three drilled holes
- pump (there are versions for liquid and foamy products available). The pumps can be exchanged without any difficulty.



Solely high-quality materials were used for the construction of the BODE Eurodispenser 1. In many respects the material quality has a positive effect on the dispenser's characteristics:

- cover made of matt silver, anodized aluminum; corrosion-resistant and shock-proof
- panel, control lever and liquid pump made of stainless V2A-steel
- rear panel, outlet screen and foam pump made of plastics with good alcohol and tension resistance
- all materials were tested for food conformity



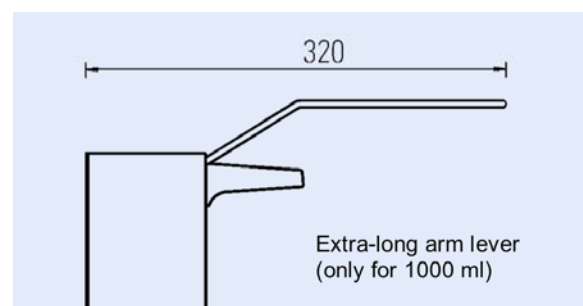
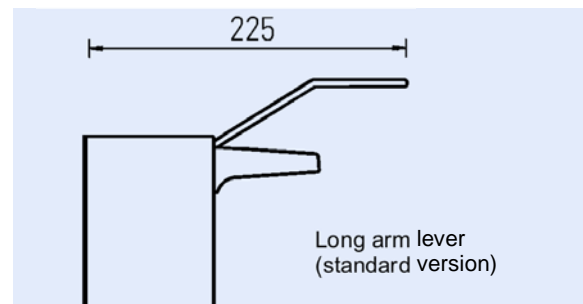
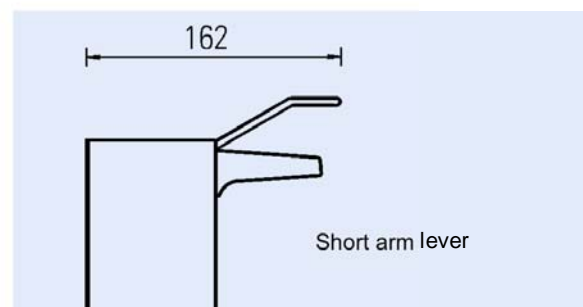
Arm lever lengths

The convenient elbow actuation is one pre-condition for the hygienic product application with direct dispensers.

Small rooms or particular deep or narrow wash basins and workspaces can make the prescribed use of the dispenser difficult.

The different arm lever lengths of the BODE Eurodispenser 1 guarantee hygienic and comfortable product application even with unfavorable room situations and inventory dimensions.

Users can make their choice between a normal and a short arm lever length for dispensers matching with 350/500 ml bottles; dispensers for 1000 ml bottles are available with short, normal and extra-long arm levers.



BODE Eurodispenser 1

Reprocessing of the BODE Eurodispenser 1

Cleaning and disinfection of the dispenser body and dosing pump should be carried out each time the bottle is exchanged.

Manual reprocessing of the dispenser:

- take bottle out of dispenser
- push cap up by pressing the locking tongue
- take out dispenser bottle and dosing pump by pulling dosing pump to the back
- rinse cover thoroughly under hot running water until no product residuals are visible anymore
- clean rear, screwed on dispenser part with moistened disposable tissue
- spray both dispenser parts with surface disinfectant (e.g. Bacillo® AF) and wipe with disposable tissues. Ready-to-use, aldehyde-free surface disinfectant wipes (Bacillo® Tissues) are a useful alternative. Pay attention to the recommended application time
- put in new or separately reprocessed dosing pump (see below) and slide on cover again
- hook in new bottle and pump product through

Manual reprocessing of the pump:

- first of all, rinse pump thoroughly with hot water and clean it of product residuals
- rinse pump thoroughly with alcohol-based surface disinfectant (e.g. Bacillo® AF) and leave it for 5 minutes
- afterwards pump it dry
- after complete drying insert pump again or store it in dust-free area

Note: Do not use abrasives or corrosive cleaners!

Sterilization

For routine usage and compliance with the hygiene standard, manual cleaning and disinfection of dispenser and dosing pump suffice. In areas where hygiene is of particular importance, a higher hygiene standard may be necessary. In this case all removable parts of the BODE Eurodispenser 1, except the foam pump, can be autoclaved with superheated steam (121 °C, 1 bar).



BODE Eurodispenser 2000



For hand disinfectants, wash lotions and skin care lotions

- made of stable, resilient plastic
- rapid pump exchange
- adjustable dosage
- rapid filling

Technical data

Dispenser for	350/500 ml	1000 ml
Height	295 mm	337 mm
Width	85 mm	107 mm
Depth incl. arm lever	206 mm	206 mm
Dosage adjustable	0.5/1.0/1.5 ml per actuation	
Autoclaving	not possible	

Properties

BODE Eurodispenser 2000 is a user-friendly dosing dispenser, which can be utilized flexibly. With its closed housing, completely made of high-grade plastic, the BODE Eurodispenser 2000 not only protects the products in the bottles, but also facilitates the product application.

BODE Eurodispenser 2000 is suitable for the application of all hand disinfectants, wash lotions and skin care products, being filled into standard bottles.

Advantages at a glance:

- made of solid, sturdy plastic
- optimal protection of product content by closed housing
- easy installation even with limited space
- all standard bottles insertable
- simple and fast bottle exchange
- easy handling and cleaning
- exchangeable pump
- dosing amount of liquid pumps adjustable (approx. 0.5/1.0/1.5 ml per actuation)
- delivery incl. mounting parts, instruction sheet and manual

Accessories



Drop catcher



Mounting angle



BODE Eurodispenser 2000



Set-up and material

The use of only a few elements makes the BODE Eurodispenser 2000 especially easy to clean. The device is set up with three parts:

- cover with vision panel and locking mechanism (by turning the underside slotted shutter through 90° the dispenser is protected against unintentional opening)
- wall holder with three drilled holes
- dosing pump (there are versions for liquid and foamy products available). The pumps can be exchanged without any difficulty

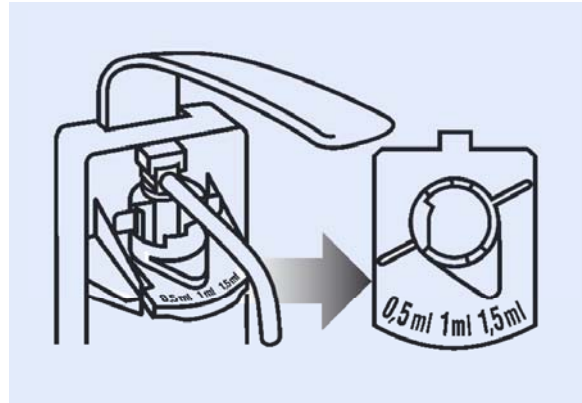
The BODE Eurodispenser 2000 entirely consists of high-quality ABS and ASA plastic. In many respects the material quality has a positive effect on the dispenser's characteristics:

- the vision panel screen features a high UV resistance. Thus, label and bottle content are legible and readily identifiable
- ABS and ASA plastics possess a good alcohol and stress crack resistance
- the material was tested for food conformity

Adjustment of dosing amount

For the liquid pump, the BODE Eurodispenser 2000 optionally allows three settings of the dosing amount per actuation. Place of installation, purpose and product viscosity are criteria for the right dosing amount. The option to vary the dosing amount is of particular importance for the use of hand disinfectants. For example in operation theatres, larger amounts per actuation may be necessary. For wash and skin care lotions the personal needs of the user play a role.

The dosing pump's default setting is 1.5 ml per actuation. In order to dose 0.5 ml or 1.0 ml per actuation, simply adjust the dosing arrow on the pump unit's top side. The foam pump does not feature the possibility to vary the dosing amount, as it is used with wash products only.



Reprocessing of the BODE Eurodispenser 2000

Cleaning and disinfection of the dispenser body and dosing pump should be carried out each time the bottle is exchanged.

Reprocessing of the casing:

- remove front dispenser part (cover) by pressing locking tongue
- take out dispenser bottle and dosing pump
- rinse front cover thoroughly under hot running water until no product residuals are visible anymore
- clean rear, screwed on dispenser part with moistened disposable tissue
- spray both dispenser parts with surface disinfectant (e.g. Bacillol® AF) and wipe with disposable tissues. Ready-to-use, aldehyde-free surface disinfectant wipes (Bacillol® Tissues) are a useful alternative. Pay attention to the recommended application time
- put in new or separately prepared dosing pump (see below)
- hook in new bottle and pump product through

The removed dosing pump is reprocessed separately:

- first of all, rinse pump thoroughly with hot water and clean it of product residuals
- rinse pump thoroughly with alcohol-based surface disinfectant (e.g. Bacillol® AF) and leave it for 5 minutes
- afterwards pump it dry
- after complete drying insert pump again or store it in dust-free area

Note: Do not use abrasives or corrosive cleaners!



BODE Eurodispenser basic



For hand disinfectants, wash lotions and skin care lotions

- made of stable, resilient plastic
- easy installation
- all materials were tested for food conformity

Technical data

Dispenser for	350/500 ml	1000 ml
Height	275 mm	310 mm
Width	74 mm	98 mm
Depth incl. arm lever	170 mm	170 mm

Leave 77 mm room above the dispenser so the cover can be opened.

Dosage adjustable from 1 to 3 ml per actuation
Autoclaving not possible

Product properties

Arm lever dispenser for the hygienic application of hand disinfectants, wash and skin-care products. Easy pump exchange through removal from the front. The BODE Eurodispenser basic is a user-friendly dosing dispenser that can be utilised flexibly.

- plastics with good alcohol and tension resistance
- simple and quick bottle exchange
- easy handling and cleaning
- dosing amount adjustable to approx. 1 to 3 ml per actuation

Set-up

- delivery includes mounting parts, instruction sheet and manual
- open cover with rear panel (drilled holes identical to Eurodispenser 1)
- pump
- ring for adjusting dosing amount

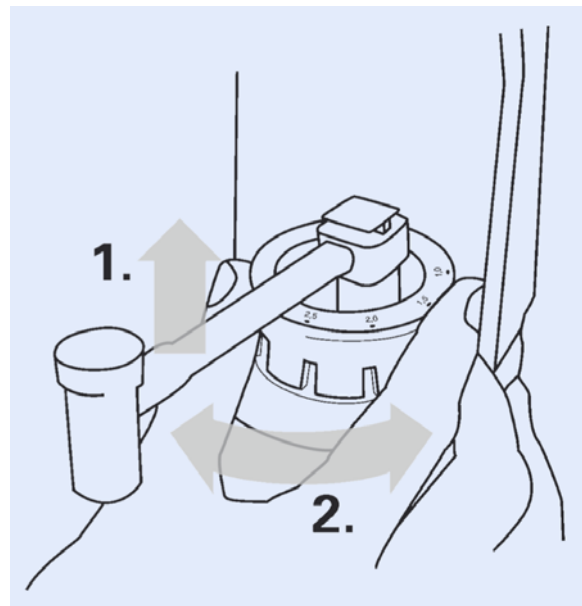
Spare parts and accessories

- drop catcher
- spare pump



Dosing

The dosing amount of the dispenser can be adjusted stepwise between 1 and 3 ml. For this, the dosing ring is lifted and turned to the desired dosing amount (arrow at the front).



BODE Eurodispenser basic

Mounting instruction

Preparation of the mounting location

When selecting the mounting location, please consider the following points:

- provide for a space of approx. 50 mm, irrespective of dispenser type (necessary for dismantling the dispenser)
- keep a minimum distance between dispenser and top edge of wash basin or work space (for trouble-free bottle exchange)
- the wall should be clean, dry and even
- mind the bearing capacity: besides weight of dispenser, pump and product bottle, the load of arm lever actuation has to be considered. Hence, please only use the provided mounting material for attaching the Eurodispenser to the wall
- make sure that no electric cables, gas mains or other utility cables and pipes are damaged by drilling

Warning: the BODE Eurodispenser basic cannot be mounted with Powerstrips. For secure installation use the provided mounting material.

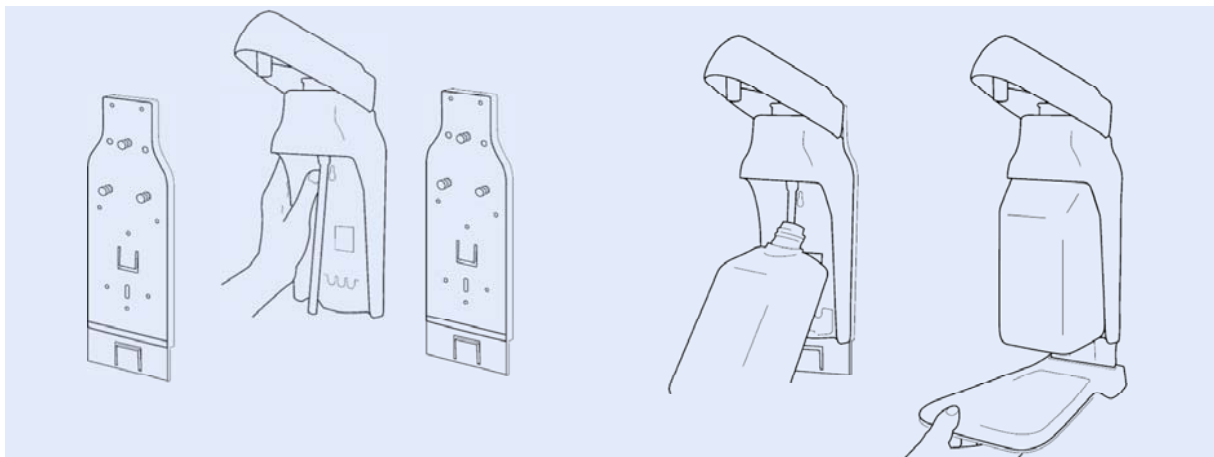
Mounting

For the mounting you need a drilling machine, a 6 mm drill (type depends on wall material) and a screwdriver or a cordless screwdriver. All other mounting materials (wall anchors, screws, shims) are included in delivery. The data on dispenser dimensions, necessary minimum distance to washbasin/work space, etc. you will find in the aforementioned detail drawings.

Mark drill holes on the wall, carry out drilling and put wall anchors in. Take dispenser out of the cardboard box:

6. mount dispenser or backplate of the drop catcher with wall anchors and screws at the designated location
7. if applicable, slide dispenser on the backplate (top-down) until the locking tongue snaps in
8. put bottle in dispenser (bottom-up)
9. for activation press arm lever several times, so that the dip tube sucks the product in. In doing so, hold your hand under the outlet

You can also attach the dispenser directly to the wall without backplate and drop catcher, with the aid of the drilling template.



Reprocessing of the BODE Eurodispenser basic

Cleaning and disinfection of the dispenser body and dosing pump should be carried out with each bottle exchange.

Manual reprocessing of the dispenser

- take bottle out of dispenser
- take dosing pump out
- clean cover with damp disposable tissues
- spray dispenser with an alcohol-based surface disinfectant and, if required, wipe it with disposable tissues; pay attention to exposure time
- insert new or separately reprocessed dosing pump (see below)
- hook in new bottle and pump product through

Manual reprocessing of the pump

- first of all, rinse pump thoroughly with hot water and cleanse it of product residues
- rinse pump thoroughly with alcoholic surface disinfectant and leave it for 5 minutes
- afterwards pump it dry
- after complete drying, insert pump again or store it in a dust-free area

Note: Do not use abrasives or corrosive cleaners



BODE Eurodispenser 2



For hand disinfectants, wash lotions and skin care lotions

- can be mounted anywhere
- long-lasting
- easy-care

Technical data

Dispenser for	350/500 ml	1000 ml
Height	200 mm	250 mm
Width	90 mm	95 mm
Depth incl. arm lever	240 mm	250 mm
Dosage	approx. 1.5 – 2 ml per actuation	

Autoclaving of the dispenser casing without pump at 121 °C, 1 bar.

Properties

The BODE Eurodispenser 2 consists of a stainless steel wire frame and combines simple design with highest functionality. The integrated arm lever allows hygienic product application by elbow. The dispenser is available in two sizes – for 500 ml or 1000 ml BODE bottles – and is suitable for the application of hand disinfectants, wash lotions and skin care products. Its robust frame is easy to install and to remove and completely autoclavable.

Advantages at a glance:

- can be mounted anywhere
- durable metal construction
- simple, space saving installation
- dispenser autoclavable*
- integrated arm lever for hygienic product application
- dosing pump with return valve included
- replacement pumps available

* dosing pump not autoclavable

Set-up and material

The BODE Eurodispenser 2 is made up of a sturdy stainless steel wire frame with integrated rear panel for wall installation and movable arm lever. The dispenser is electropolished, thus having a particular smooth, shiny surface. Besides the optical effect, this special finish provides hygienic advantages: an additional coating, which could peel off, is not necessary. The wire frame is designed for 350/500 ml or 1000 ml BODE bottles and ensures a very good hold.

The BODE Eurodispenser 2's arm lever has a length of 200 mm. The flexible hinge enables an easy actuation and a trouble-free bottle exchange. The dosing pump, which is used with the BODE Eurodispenser 2, is included in delivery.

Reprocessing of the BODE Eurodispenser 2

Cleaning and disinfection of the dispenser body and dosing pump should be carried out each time the bottle is exchanged.

Manual reprocessing:

- take bottle out of dispenser by flipping up arm lever
- afterwards remove dosing pump, which has to be prepared separately
- remove dispenser frame from wall by slightly pushing it up and pulling to the front
- spray dispenser frame with surface disinfectant (e.g. Bacillol® AF) and wipe with disposable tissues. Ready-to-use, aldehyde-free surface disinfectant wipes (Bacillol® Tissues) are a useful alternative. Pay attention to the recommended application time
- place dispenser with rear panel in the wall-mounted holder and pull down until the frame snaps in the upper small punchings
- insert new bottle with reprocessed or new dosing pump into the holder and turn arm lever down. Pump product through

Manual reprocessing of the pump:

- first of all, rinse pump with hot water and clean it of product residuals
- rinse pump with alcohol-based surface disinfectant (e.g. Bacillol® AF) and leave it for 5 minutes
- afterwards pump it dry
- after complete drying insert pump again or store it in dust-free area

Note: Do not use abrasives or corrosive cleaners!

Autoclaving:

For routine usage and compliance with the hygiene standard, manual cleaning and disinfection of dispenser and dosing pump suffice. In areas where hygiene is of particular importance, a higher hygiene standard may be necessary. In this case the BODE Eurodispenser 3 – except the dosing pump – can be autoclaved with superheated steam (121 °C, 1 bar).



BODE Eurodispenser 3



Bedframe dispenser for hand disinfectants and skin care lotions

- stainless steel dispenser
- easy handling
- available with straight or angled backside clip
- does not include any dosing pump

Technical data

Dispenser for

	500 ml straight clip	500 ml angled clip	500 ml narrow straight clip
Height	113 mm	140 mm	135 mm
Width	73 mm	73 mm	73 mm
Depth	75 mm	75 mm	75 mm

(without clip)

Autoclaving at 121 °C, 1 bar

Alternative fixation devices

Pipe clamp

Table clamp

Wall plate for mounting with screws or tape

Properties

Consisting of a stainless steel wire frame, the BODE Eurodispenser 3 was particularly designed for the attachment to bedframes. Depending on the bed design, the dispenser is available in two versions – one with angled holder for the attachment to tubular frames and one with straight holder for the attachment to the foot part. The BODE Eurodispenser 3 is suitable for the application of hand disinfectants and skin care products in 500 ml BODE bottles. The robust dispenser is simply hung over the tubular frame or foot part and can be removed just as simply. Its wire frame provides good hold of the bottles and can be autoclaved if necessary. The dosing pump is available separately.

Advantages at a glance:

- high-quality stainless steel
- easy installation and handling
- available with straight or curved holder
- dispenser autoclavable*
- alternative fixation devices available

* dosing pump not autoclavable

Set-up and material

The BODE Eurodispenser 3 is made up of a sturdy stainless steel wire frame. The dispenser is electropolished, and therefore has a particular smooth, shiny surface. Besides the optical effect, this special finish provides hygienic advantages: an additional coating, which could peel off, is not necessary.

Reprocessing of the BODE Eurodispenser 3

Cleaning and disinfection of the dispenser body and dosing pump should be carried out each time the bottle is exchanged.

Manual reprocessing:

- take bottle out of dispenser. The dosing pump has to be reprocessed separately
- remove dispenser from tubular frame or foot part
- spray dispenser frame with surface disinfectant (e.g. Bacillol® AF) and wipe with disposable tissues. Ready-to-use, aldehyde-free surface disinfectant wipes (Bacillol® Tissues) are a useful alternative. Pay attention to the recommended application time.
- hang dispenser over the tubular frame and the foot part respectively
- insert new bottle with prepared or new dosing pump into the holder. Pump product through

Manual reprocessing of the pump:

- first of all, rinse pump with hot water and clean it of product residuals
- rinse pump with alcohol-based surface disinfectant (e.g. Bacillol® AF) and leave it for 5 minutes
- afterwards pump it dry
- after complete drying insert pump again or store it in dust-free area

Note: Do not use abrasives or corrosive cleaners!

Autoclaving

For routine usage and compliance with the hygiene standard, manual cleaning and disinfection of dispenser and dosing pump suffice. In areas where hygiene is of particular importance, a higher hygiene standard may be necessary. In this case the BODE Eurodispenser 3 – except the dosing pump – can be autoclaved with superheated steam (121 °C, 1 bar).



BODE Eurodispenser 3000



For hand disinfectants, wash lotions and skin care lotions

- dosed delivery
- easy exchange of original bottles
- particularly economic dispenser system made of plastic

Technical data

Dispenser for	350/500 ml
Height	210 mm
Width	58/65 mm
Depth	110 mm
Dosage	approx. 1.5 – 2 ml per actuation
Autoclaving	not possible

Properties

The BODE Eurodispenser 3000 is a simple and practical application aid for the hygienic application of wash lotions and skin care preparations as well as for the application of hand disinfectants in limited spaces.

The dispenser allows a fast and straightforward insertion of 350/500 ml BODE bottles.

Advantages at a glance:

- made of solid, sturdy plastic
- simple handling and cleaning/disinfection
- mountable even with limited space
- delivery incl. mounting parts, instruction sheet, manual and dosing pump
- special replacement pump for Eurodispenser 3000 available

Set-up and material

The BODE Eurodispenser 3000 is made of robust, sturdy plastic.

The system consists of two parts:

- rear plastic panel with two drilled holes
- dosing pump for liquid products

Characteristics:

- good UV and alcohol resistance
- tested for food conformity
- rear panel and dosing pump not autoclavable

Preparation

Cleaning and disinfection of the dispenser body and dosing pump should be carried out each time the bottle is exchanged.

Cleaning and disinfection of rear panel:

- unscrew dosing pump
- take out bottle
- wipe rear panel surface with an alcohol-based surface disinfectant (e.g. Bacillol® AF). Ready-to-use, aldehyde-free surface disinfectant wipes (Bacillol® Tissues) are a useful alternative. Pay attention to the recommended application time.

Reprocessing of dosing pump:

Repeatedly used dosing pumps for hand disinfectants, wash and skin care products have to be cleaned and disinfected with each bottle exchange:

- remove dosing pump from empty bottle
- wipe thoroughly with moistened disposable tissue
- screw it on a bottle filled with hot water and rinse thoroughly
- unscrew pump and dry with disposable tissue
- rinse pump with alcohol-based surface disinfectant (e.g. Bacillol® AF) and leave it for 5 minutes
- pump it dry, unscrew and let dry
- wipe screw top and pump outlet with alcohol-soaked disposable tissue
- screw pump on new original bottle in dispenser

Note: Do not use abrasives or corrosive cleaners!



BODE Wall-mounted Rack

To install BODE bottles
in different sizes



Suitable for BODE bottles in different sizes,
or for our Bacillol® Tissues dispenser
(Wall-mounted Rack 1000)

- easy to mount by screws or tape
- made of robust, sturdy plastic
- convenient in cleaning, also suitable for wet areas
- not autoclavable
- does not include any dosing pump

BODE Wall-mounted Rack 350*
BODE Wall-mounted Rack 500*
BODE Wall-mounted Rack 1000*

* indicates the bottle size

Properties

The BODE Wall-mounted Racks are completely made up of solid plastic, thus, providing a stable solution for various applications. The modern, transparent design convinces optically. The racks are fast and easy to install as well as to clean/disinfect.

Advantages at a glance:

- made of robust, sturdy plastic
- simple installation and reprocessing
- available for 350 ml, 500 ml and 1000 ml BODE bottles and containers (Bacillol® Tissues)
- delivery incl. mounting parts, instruction sheet and manual
- mounting also possible with tape
- not autoclavable. Delivery without bottle/container

Flexible module system:

Not only the BODE Wall-mounted Rack's space-saving dimensions provide practical advantages, but also its flexible set-up. The rear panels of all three models (for 350 ml, 500 ml and 1000 ml BODE bottles) are identical. By attaching the respective cup to an already mounted rear panel, it is very simple to change to another bottle size.

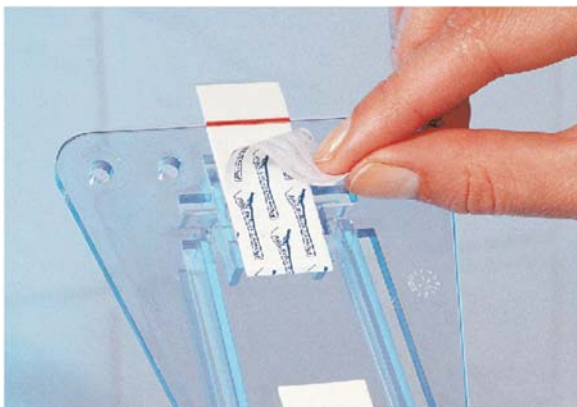
Set-up and material

The BODE Wall-mounted Racks are set up of two elements:

- rear panel with fixation bar for the cup
- cup, suitable for the respective bottle size

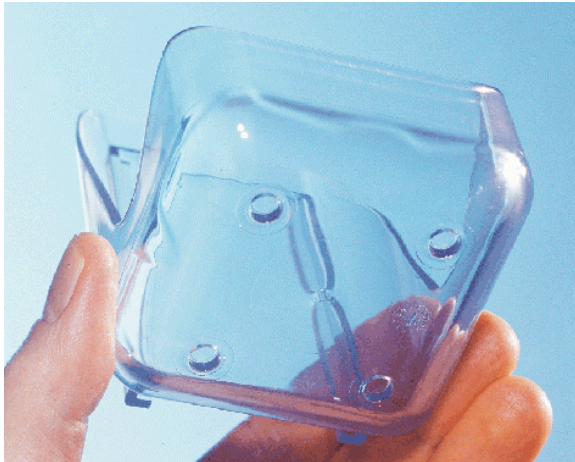
BODE Wall-mounted Racks consist of robust ABS plastic with following material properties:

- resistant against UV light and alcohol
- tested for food conformity
- not autoclavable

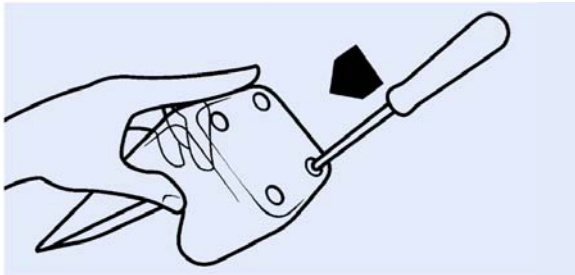


BODE Wall-mounted Rack

BODE Wall-mounted Racks in wet rooms



BODE Wall-mounted Racks are particularly suitable for the storage and application of wash and shower lotions in wet rooms. In order to prevent the gathering of water, the cup has four small holes on its underside (still closed on delivery) serving as water outlet. Prior to anchoring the cup to the rear panel, these holes can easily be pierced with a screw driver.



Exchange of the cups

The cup exchange is very simple, as all three BODE Wall-mounted Rack versions possess an identical rear panel.

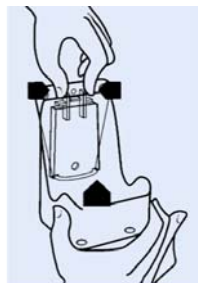
An exchange may be necessary due to:

- the change to another bottle size
- cleaning and disinfection of the BODE Wall-mounted Rack
- cup wearout and defect respectively

Taking out the cup:

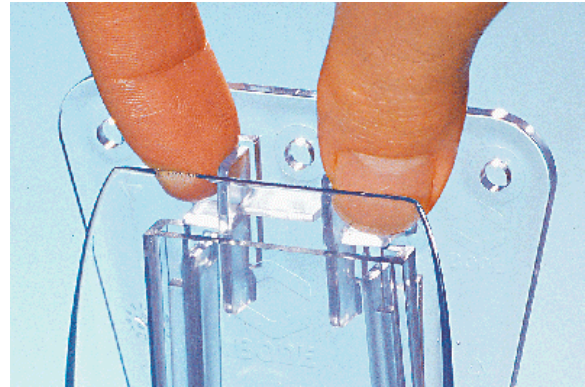
- press both straps at the top side of the rear panel
- push cup up in order to release anchoring

Inserting the new cup:
slide new cup top down onto rear panel until anchoring snaps in



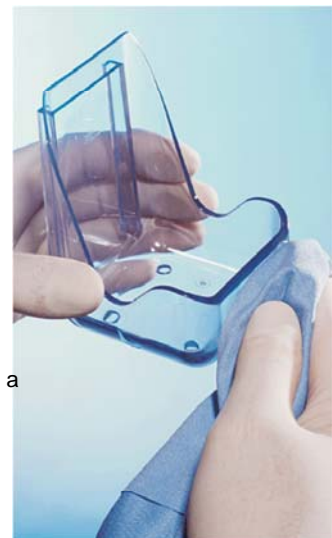
Reprocessing of the Wall-mounted Racks

The BODE Wall-mounted Racks should be cleaned and disinfected regularly, at least when it is visibly soiled. Repeatedly used dosing pumps for hand disinfectants, wash and skin care products have to be cleaned and disinfected with each bottle exchange.



Cleaning and disinfection of rear panel and cup:

- remove cup from rear panel
- wipe the rear panel's surface as well as the cup's in- and outside with an alcohol-based surface disinfectant (e.g. Bacillol® AF). Ready-to-use, aldehyde-free surface disinfectant wipes (Bacillol® Tissues) are a useful alternative. Pay attention to the recommended application time
- slide cup onto rear panel again



Cleaning and disinfection of the dosing pump:

- remove dosing pump from empty bottle
- wipe thoroughly with moistened disposable tissue
- screw it on a bottle filled with hot water and rinse thoroughly
- unscrew pump and dry with disposable tissue
- rinse pump with alcohol-based surface disinfectant (e.g. Bacillol® AF) and leave it for 5 minutes
- pump it dry, unscrew and let dry
- wipe screw top and pump outlet with alcohol-soaked disposable tissue and let dry
- screw pump on new original bottle and pump until product is sucked in



Application aids



Only with using application aids an exact application and dosing of disinfectants, cleanings agents and skin care products can be achieved. Thus, they have a major share in the hygiene success as well as in the user safety and product efficiency.

Properties

BODE's assortment offers a multitude of application aids, which:

- facilitate product application
- enable the filling and pouring from larger containers
- allow a hygienic product application
- permit the preparation of use-solutions
- help to avoid under- and overdosing
- facilitate moistening of surfaces being difficult to access

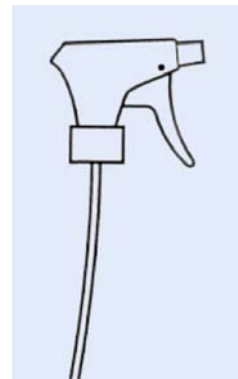
Areas of application

BODE's application aids are used in the hand and skin antiseptics, cleaning and care as well as in the disinfection and cleaning of surfaces and instruments.

BODE pump spray heads

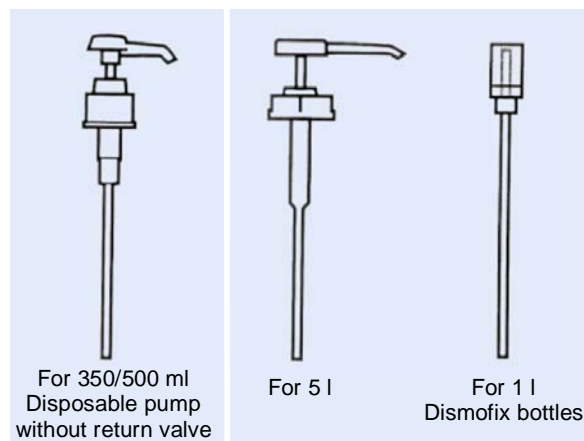
BODE pump spray heads permit an even moistening of areas – even when they are difficult to access. The application aids are for example used for the flat spraying of surface disinfectants, such as Bacillo®[®], Bacillo® AF, Bacillo® plus and Bacillo® 25, as well as for the pre-surgical application of Cutasept® F, Cutasept® med F and Cutasept® G.

BODE pump spray heads are available as universal spray heads and foam spray heads.



BODE dosing pumps / attachments

BODE dosing pumps allow the convenient and hygienic application of products in original BODE bottles and canisters. They are available in various versions and for different container sizes.



Application aids

Further application aids

A variety of application aids provide the precise, clean dosage and application of disinfectants and cleaning agents. Thus, a maximum of user safety and efficiency can be achieved.



Footspray device

For the application of alcohol-based foot sprays protecting against athlete's foot.



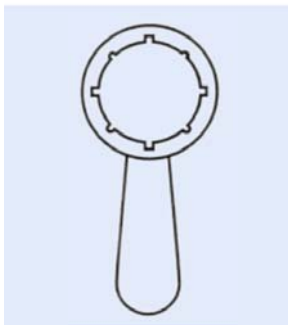
Desomat 800

Microprocessor-controlled dosing device for preparing use-solutions from concentrates.



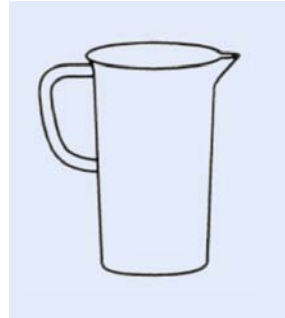
Dosing device 600

Dosing device for preparing use-solutions from concentrates.



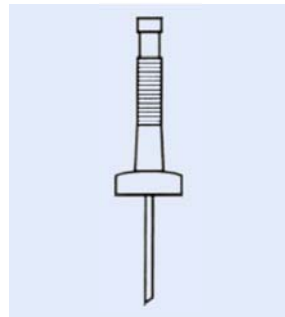
Canister key

For the effortless opening of BODE 2,5 and 10 liter canisters.



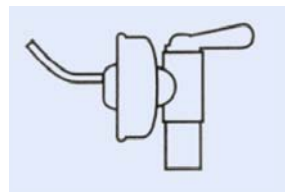
Measuring beaker

For the accurate preparation of use-solutions.



Spout

For the clean and drip-free pouring of products out of 5 liter canisters.



Discharge tap

For taking products out of BODE canisters cleanly and without dripping.



BODE hand sprayer

For the even wetting of surfaces with aqueous and ready-to-use disinfection solutions.



1000 ml dosing bottle

For the exact dosing of concentrated liquids.



BODE X-Wipes



Universal fleece wipe dispenser for all liquid BODE surface disinfectants

- universally applicable
- standing time of working solution: 4 weeks
- protects working solution against contamination and evaporation
- wipes are tearproof and lint-free

Areas of application

BODE X-Wipes are recommended for the disinfectant surface cleaning in all areas of hospitals, nursing homes, pharmaceutical companies, labs and food-processing companies, where a maximum level of hygiene, efficacy and convenience is required.

Application

The BODE X-Wipes dispenser system is intended for use with all liquid BODE surface disinfectants in concentrations of exposure times of 1 hour or less (according to the DGHM – German Society for Hygiene and Microbiology). The dispenser is to be filled with 2.5 - 3 liters of working solution. With proper closure the BODE surface disinfectants used with BODE X-Wipes have a standing time of 4 weeks.

Disinfection baths



Accessories for instrument disinfection

- for the simple treatment of all kinds of instruments in hospitals, medical practices and laboratories
- moulded handles
- practical basket insert made of white PVC for the removal of instruments

Outer dimensions

Length x width x height

3 l bath 300 x 200 x 110 mm

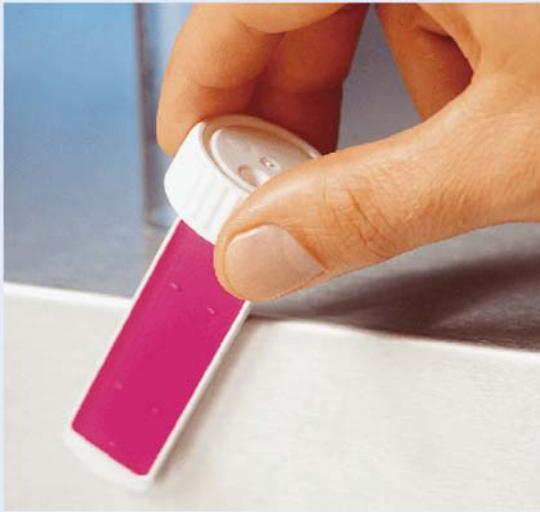
5 l bath 550 x 200 x 120 mm

10 l bath 390 x 290 x 170 mm

30 l bath 615 x 400 x 210 mm
(incl. discharge tap)



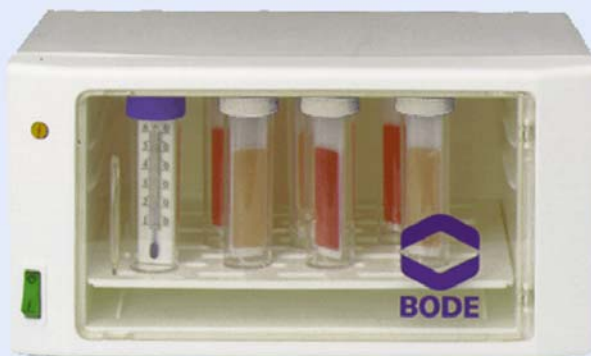
BODE Dip Slides Combi



Dip slides for detecting aerobic bacteria, yeasts and fungi

- economic inhouse testing to monitor hygiene status
- to determine the total microorganism count in liquids and on surfaces
- 2-chamber system (2 diff. agar media per slide)
- for separate detection of aerobic bacteria, yeasts and fungi

Incubator



For incubating BODE Dip Slide

- the little incubator provides an inexpensive possibility for rapid incubation of nutrient media.
- simplicity of operation and constant temperature ensure a high degree of operational reliability.

10-08

